

Oracle Products for z/Linux

Barry N. Perkins
Oracle Corporation

Barry.Perkins@Oracle.com

What is Oracle9i Database Linux on IBM S/390 and zSeries

- Oracle9i R2 Database for Linux/390 (31-bit)
 - Same as any other major UNIX port
 - Built on SuSE (SLES7) for IBM S/390 (31-bit)
 - 31-bit database implementation
 - Runs on IBM S/390 (32-bit) and zSeries (64-bit) hardware
 - 9.2.0.5 is the latest patch set – working on 9.2.0.7
- Oracle Transparent Gateway for DRDA
- Oracle Application Server for Linux/390
 - OC4J (Oracle Containers for Java – J2EE)

Oracle9i Database for Linux/390

Linux Distribution Certifications

- Complete
 - Red Hat Linux 7.2 for IBM S/390 (31-bit)
 - SuSE Linux Enterprise Server 8 for IBM S/390 (31-bit)
 - Including RAC (Real Application Clusters)
 - SuSE Linux Enterprise Server 8 for IBM zSeries (64-bit)
 - Including RAC (Real Application Clusters)
- Not possible due to lack of 31-bit libraries
 - Red Hat Linux 7.1 for IBM zSeries (64-bit)

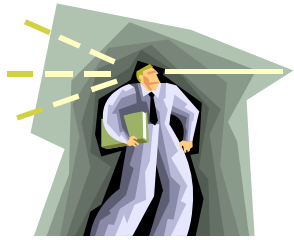




Oracle Product Directions

Linux on IBM S/390 and zSeries

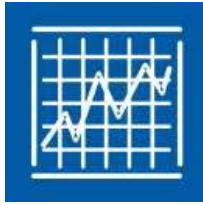
- Oracle Database 10_g Release 1 for z/Linux
 - Available October 19, 2004
 - 64-bit implementation only
 - Only runs on IBM zSeries (64-bit) servers
 - Built on SuSE Linux Enterprise Server 8 for IBM zSeries (64-bit)
- Certifications (target Q2CY2005)
 - Red Hat Advanced Server 4.0 for IBM zSeries (64-bit)
 - SuSE Linux Enterprise Server 9 for IBM zSeries (64-bit)
- Split-Tier certifications – Complete
 - Oracle Collaboration Suite Release 2 (9.0.4)
- Split-Tier certifications – Planned (target Q3CY2005)
 - E-Business Suite 11*i*
 - Oracle Application Server



Oracle Product Directions

Linux on IBM S/390 and zSeries

- Oracle Application Server 10_g for z/Linux
 - OC4J (Oracle Containers for Java – J2EE)
 - Oracle Application Server (TBD)
- Native ports – Not Planned
 - Oracle E-Business Suite
 - Oracle Collaboration Suite



Oracle's Strategy

How does eServer fit?

- Platform Agnostic
 - Integral part of Oracle's focus on customer success
 - Provide Customer Flexibility
 - Hardware and Operating System
- Technical Leadership
- Enterprise Platform Integration
- Enterprise Integration
- Server Consolidation
- Legacy Migration

Oracle on IBM running Linux

OpenPower
BladeCenter – JS20



Available



xSeries



zSeries



pSeries

iSeries



Available



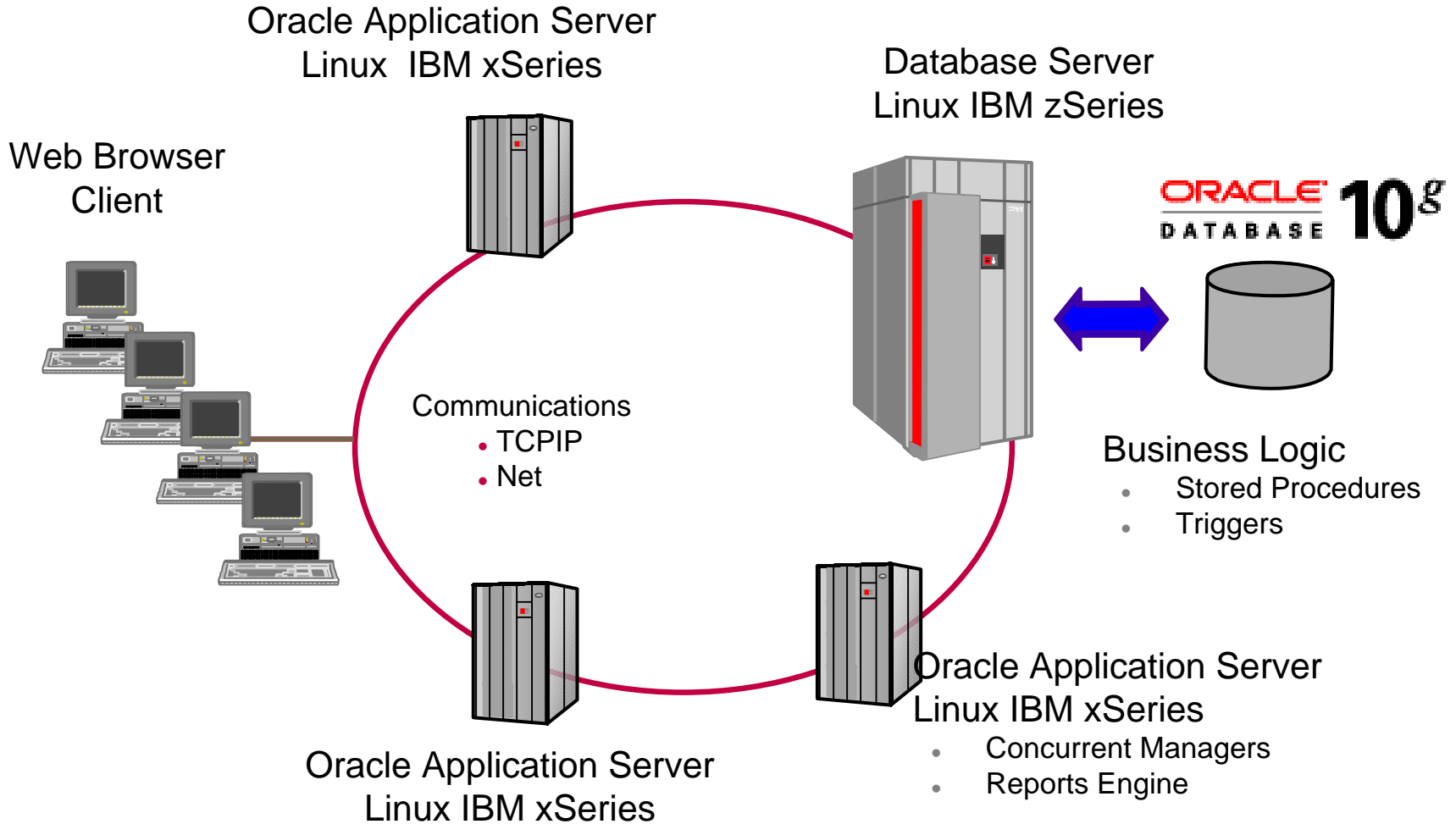
Available

Production
Target
Q3CY2005

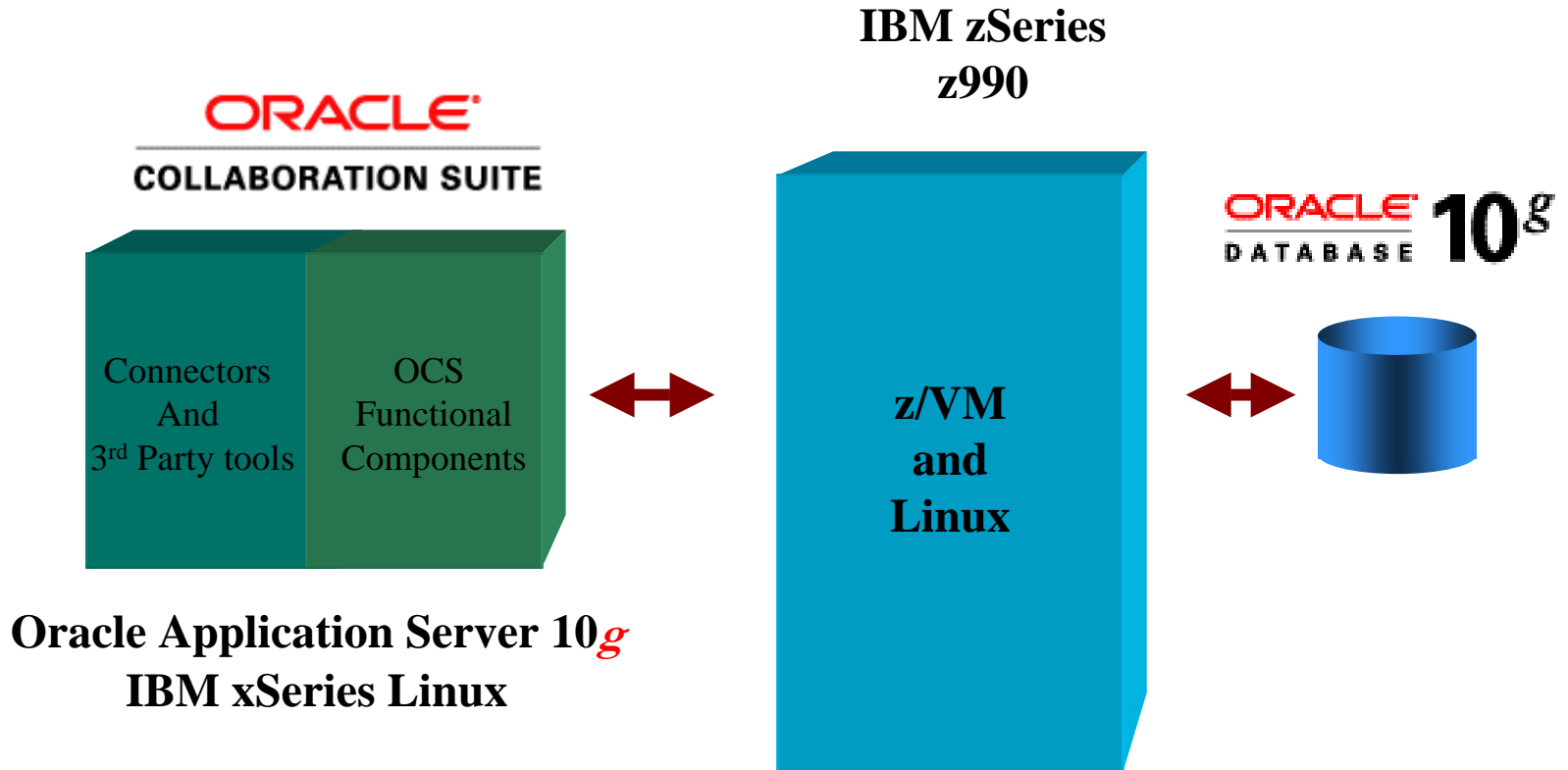
Developer's
Release
Available

ORACLE

Example...



Example on Linux...



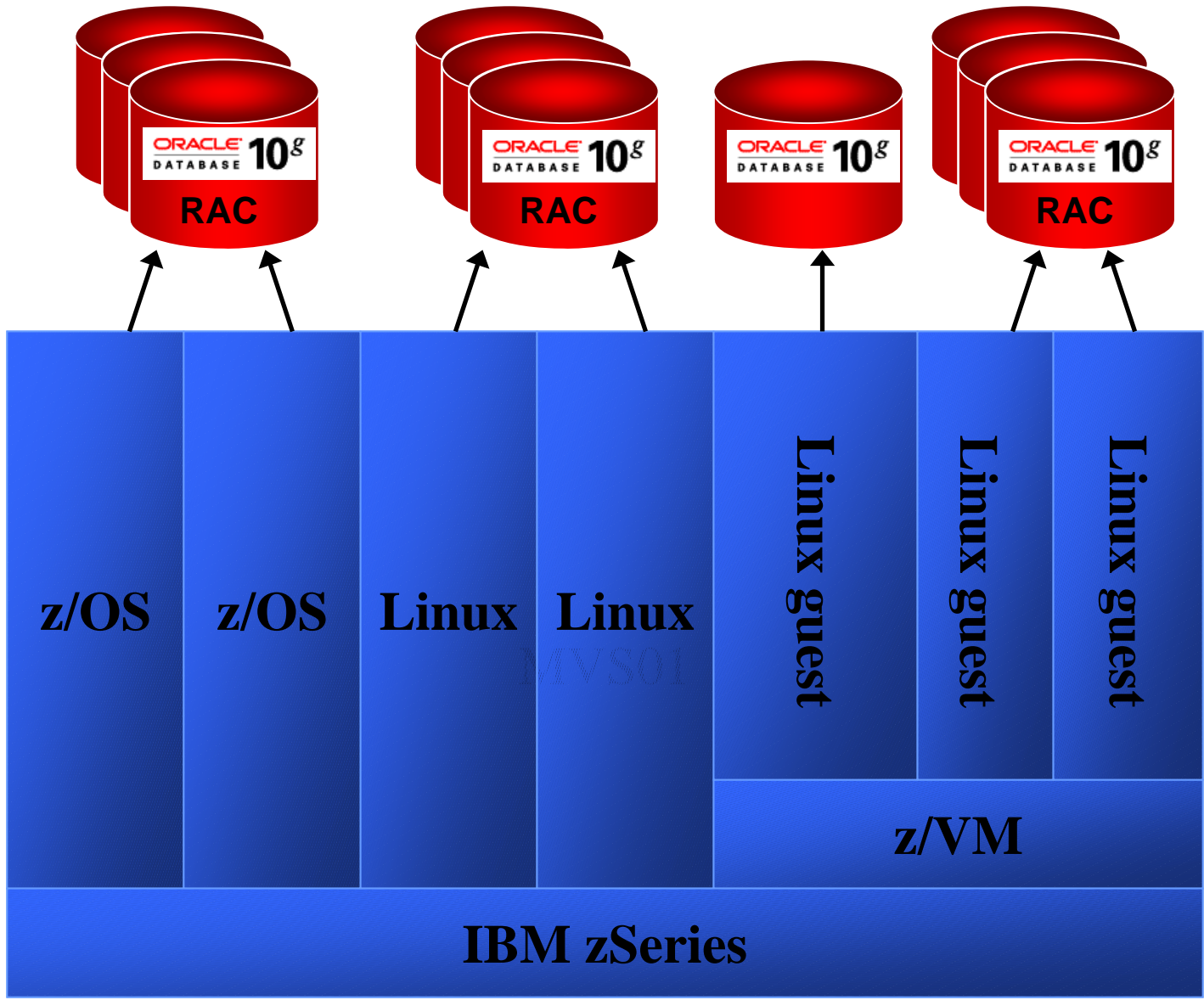
Delivering Solutions

Oracle and IBM working with...

- Siebel now supports Oracle9iR2 for Linux/390
 - Was demonstrated at IBM's booth at LinuxWorld in San Francisco, August 2004

zSeries Configuration

- Logical Partitions (LPAR)
 - Hardware partitioning enabling up to 15 "logical partitions" each of which runs a separate operating system, traditional operating system and Linux
- Virtual Partitions (z/VM)
 - zSeries virtualization technology
 - Support for large numbers of Linux images with rich system management capabilities
 - Very flexible, great for server consolidation



Why Customers Chose Oracle for z/Linux

- Total Cost of Ownership
 - Server Consolidation
 - Staffing
- Reliability, Availability and Serviceability
- Rapid deployment
 - Time to market competitive advantage
- Ease of management of servers
 - Cloning “Virtual Blades”
 - Cookie cutter approach
- Ease of horizontal and vertical growth
- Portability and ease of migration



Oracle Customers

Leveraged benefits

- Consolidation
 - Application systems playing well together
 - Reduced floor space and environmentalals
- Integration
 - Data
 - Oracle Transparent Gateways
 - Easy SQL Access
 - Application
 - JAVA with Oracle Application Server adapters
 - New legacy adapters in upcoming release
 - Enterprise exploitation of diverse systems
- Migration
 - Legacy data stores to modern RDBMS
 - Rapid development and web deployment
 - Exploit your mainframe environment

The Oracle/IBM Technology Relationship

- The global business relationship between IBM and Oracle leverages the products and services of both companies to provide mutual customers with a unique value proposition:
 - best-of-breed software
 - world-class hardware
 - unmatched global delivery capability.
- Our measure of success: Successful customers.



The Oracle/IBM Technology Relationship

- A strong technology relationship
 - Continuous technology exchange
 - Significant investment by both companies
- Joint work on all key requirements for a viable solution
 - Performance
 - Reliability
 - Manageability
 - High Availability & Disaster Recovery
 - Quality & Support



The Oracle/IBM Technology Relationship

- Joint Development
 - IBM engineers at Oracle
 - Permanently working on-site at Oracle Headquarters
 - Mission: advanced development of future Oracle products
 - Enhancements to leverage new IBM features
- Three IBM/Oracle Competency Centers
 - **Worldwide/ US: Based in San Mateo, CA (close to Oracle HQ)**
 - EMEA: Joint Solutions Center based in Montpellier
 - A/P: IBM/Oracle Competency Center based in Tokyo
- Oracle – literate Advanced Technical Support team
- IBM's BCS and IGS practices
- Joint Support process
 - IBM and Oracle support organizations communicate directly
 - On-site team helps in tough debugging and critical situations

Oracle Reference Material

- Oracle Technology Network
 - All Oracle Database 10g generic Linux documentation
 - All Oracle Database 10g Linux on Intel documentation
 - Oracle Database 10g for z/Linux Release notes
- White Paper
 - Oracle for Linux/390 Overview

Oracle on the Web

- Oracle Linux Forum
 - <http://otn.oracle.com/tech/linux/content.html>
- Oracle for Linux/390 or z/Linux Information and Download
 - <http://www.oracle.com/start>
 - Enter zLinux
 - Press Submit

IBM Redbooks at www.redbooks.ibm.com

- Redbooks on VM and Linux on S/390 and zSeries
 - Linux for IBM eServer zSeries and S/390: Distributions, SG24-6264
 - Linux for S/390, SG24-4987-00
 - Linux on zSeries and S/390: Systems Management SG24-6820-00 (in review)
 - Linux on IBM eServer zSeries and S/390: ISP/ASP Solutions, SG24-6299
 - Building Linux Systems Under IBM VM, REDP0120
- Oracle Redbooks on zSeries
 - SG24 6552 - Experiences with Oracle for Linux on zSeries (Oracle9i)
 - SG24 7055 - Experiences with Oracle10g on z/OS April 2004
 - REDP3859 - Installing Oracle10g on Linux on zSeries (Dec 2004)
 - SG24 6482 – Experiences with Oracle 10g on Linux on zSeries (April 2005)

Web Addresses

- z/VM Performance
 - <http://www.vm.ibm.com/perf>
- Linux for IBM eServer zSeries
 - <http://www-1.ibm.com/servers/eservers/zseries/os/linux>
- SuSE
 - <http://www.suse.com/>
- Red Hat
 - <http://redhat.com/>
- Redbooks
 - <http://www.redbooks.ibm.com/>
- Marist Forum
- Slashdot.org
 - www.slashdot.org

Oracle and IBM

Working together for customer success

- IBM provides hardware, software and engineering
- IBM provided test/benchmark support, software support, new Redbooks
- IBM is responsive to our issues
- Oracle influences IBM engineers and engineering
- Oracle and IBM focus on **Customer Success**

Oracle &
IBM



We make a great team!



ORACLE

-



Q U E S T I O N S
A N S W E R S